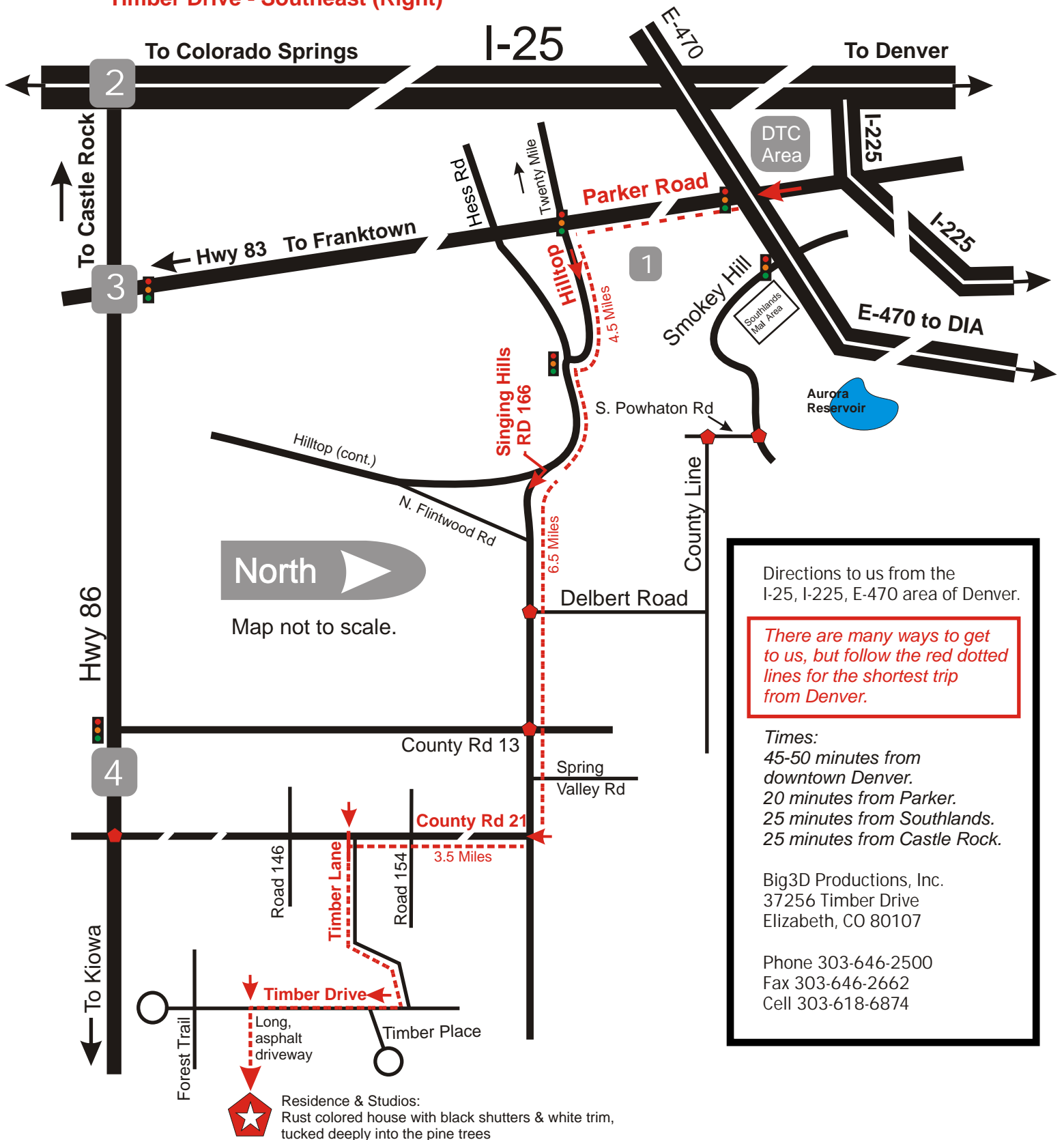


MAIN TURNS:

- I-25, E-470 or I-225 to Parker Road
- Parker Road - South
- Hilltop Road - East (Left)
- Singing Hills Road - East (Left)
- County Road 21 - South (Right)
- Timber Lane - East (Left)
- Timber Drive - Southeast (Right)

DTC Denver Tech Center

- 1** Parker
- 2** Castle Rock
- 3** Franktown
- 4** Elizabeth



Directions to us from the I-25, I-225, E-470 area of Denver.

There are many ways to get to us, but follow the red dotted lines for the shortest trip from Denver.

Times:
 45-50 minutes from downtown Denver.
 20 minutes from Parker.
 25 minutes from Southlands.
 25 minutes from Castle Rock.

Big3D Productions, Inc.
 37256 Timber Drive
 Elizabeth, CO 80107

Phone 303-646-2500
 Fax 303-646-2662
 Cell 303-618-6874

Residence & Studios:
 Rust colored house with black shutters & white trim, tucked deeply into the pine trees